

delta

3000 DC

delta



www.ilapak.com



PACKAGING MACHINERY

TECHNICAL SPECIFICATIONS

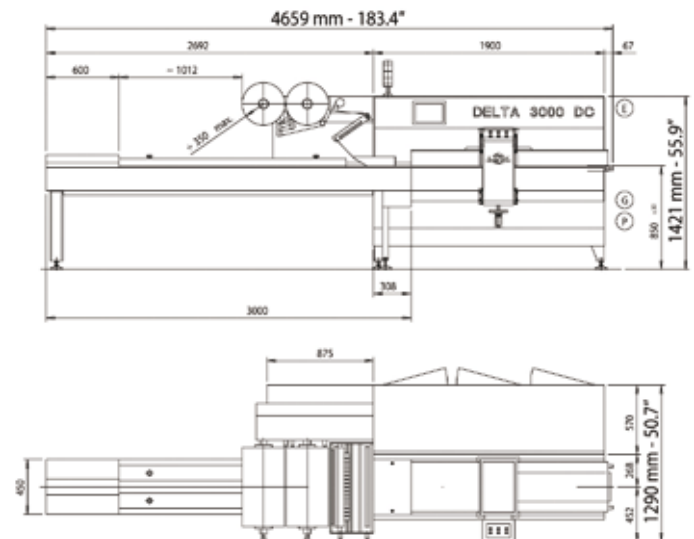
Machine speed	Up to 150 cycles per minute (single jaw) Up to 300 cycles per minute (twin jaw) Production output depends on film sealability and product characteristics.
Product dimensions	
LENGTH	Up to 400mm - 16" According to the head design
WIDTH	140mm - 5.5"
HEIGHT	Up to 60mm - 2.4" According to the head design
Film cut-off	Min 80mm - 3.1" / Max 450mm - 17.5" Depending on film and product characteristics.
Wrapping materials	Laminated, co-extruded and all sealable films
Film reel dimensions	
CORE Ø	76.2mm - 3" standard 152.4mm - 6" on request
OUTER Ø	350mm - 13.8" standard 400mm - 15.7" on request (auto-splicer only)
WIDTH	500mm - 19.7" standard 650mm - 25.6" on request
Film reel max weight	Depending on film reel width, up to 75 kg - 165 lbs
Electronic platform	Industrial PC For USA & Canada, in particular, Allen Bradley platform available.
Power requirement	From 220 to 480 V, 50/60 Hz, 7kVA
Compressed air	6 bar, 200l/min
Machine weight	1400 Kg - 3100 lbs

MAIN STANDARD FEATURES

- D-cam sealing head to optimize sealing cycle.
- 4 servo motors to control infeed, rollers, jaws, film feed (additional motors with automatic feeders).
- User friendly 10" colour VGA touch screen operator interface with intuitive icons.
- 128 programs (additional memory on request).
- Automatic product size change.
- Integrated temperature control.
- Film tensioning and power unwind system controlled by loadcell.
- Electronic diagnostic on-board.
- No product/ no bag.
- Misplaced product detection system.
- I/O for peripheral units (printer, labelers, gas control, etc.)
- Double film reel mounting with self-centering cones, right hand machine version, 3m long infeed, standard.
- Robust, hygienic, easy to clean design, epoxy powder coating standard or (optional) stainless steel finishing.

Please discuss your needs with our local representative to configure these machines to your product's specific requirements.

ILAPAK is ISO 9001:2000 certified



All measurements not specified in inches are given in millimeters.

These specifications are not binding. We reserve that right to change them without prior notice.